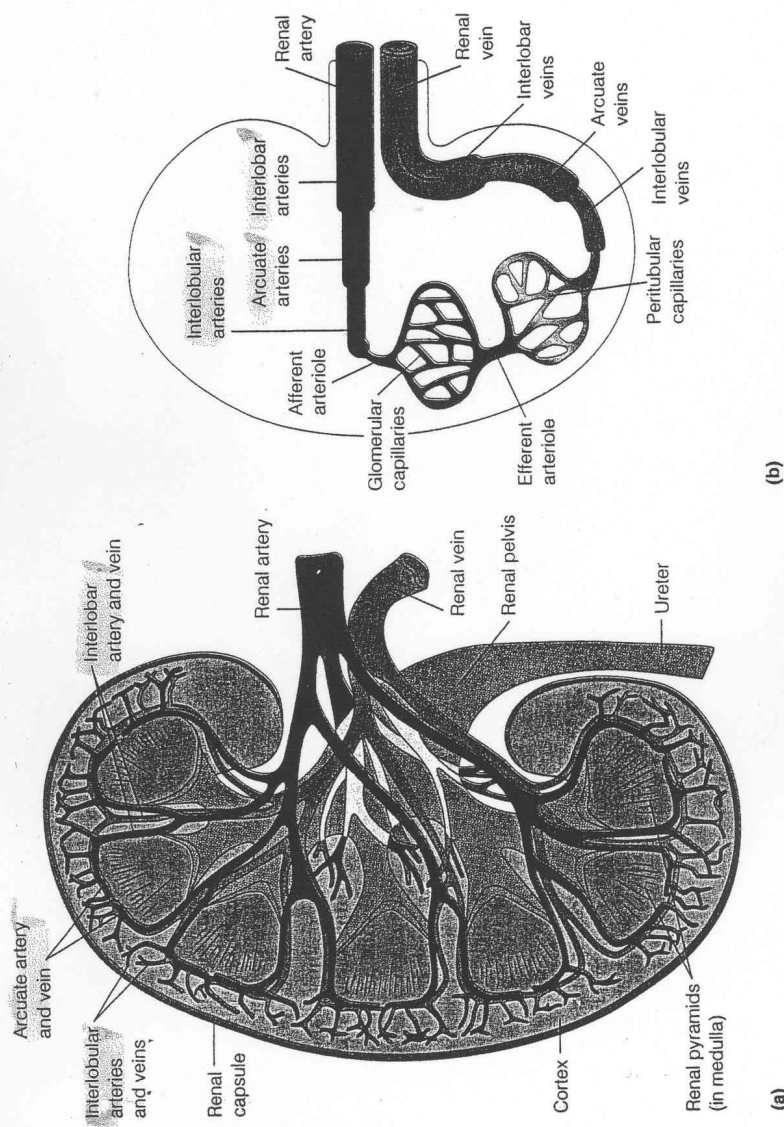


# KIDNEY-ON-A-STICK

- A** Medulla
- B** Cortex
- 1** renal vein
- 2** renal artery
- 3** ureter
- 4** pelvis
- 5** minor calyces = the spaces into which the papillae project
- 6** renal papillae = the apex of the pyramid
- 7** renal pyramids
- 13** interlobular arteries
- 16** arcuate arteries
- 17** interlobular veins
- 18** arcuate veins
- 19** papillary ducts = the fine grooves



◆ **FIGURE 23.11.** (a) Frontal section through the right kidney showing the renal blood supply. (b) Diagrammatic representation of the blood pathway through the kidney. The actual locations of the arteries and veins seen in this diagram are shown in (a).